

Install Guide

Lower Engine Torque Mount - Inserts and Bushing

- Raise vehicle evenly and safely support

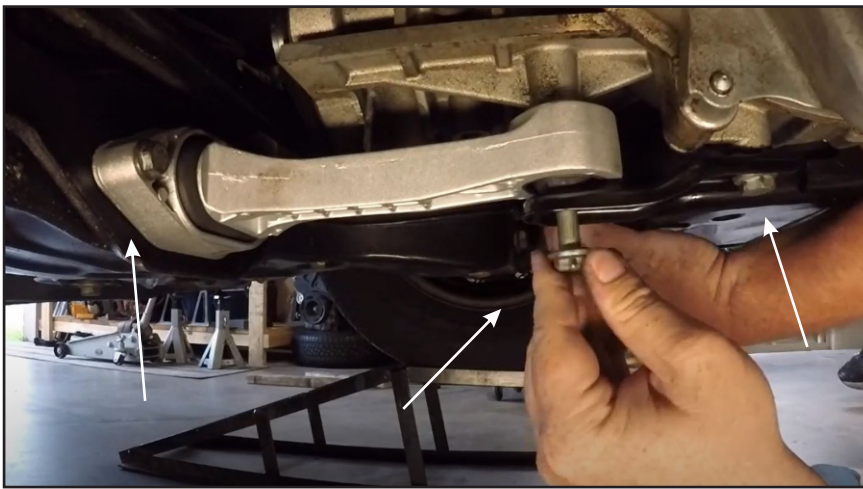
Never rely on a Jack only

- Proceed to unbolt mount - refer 4 mounting bolts below.

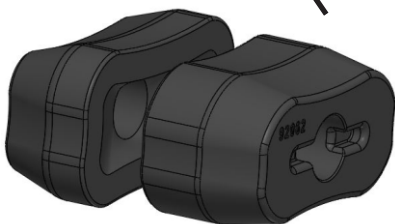
Application - VW Golf 1999-2006
 - VW Jetta 1999-2006
 - VW Beetle 1998-2006

(always refer current catalogue listing)

Contents - insert 92062 x1
 - insert 92063 x1
 - bushing 92064 x1
 - steel tube 19x10.2x40 x1
 - grease



- Remove small through bolt - to remove old rubber inserts.



- Press out old vertical mount bushing including steel outer shell.

- Using soapy water, press in bushing 92064. Grease bushing internal diameter, then push steel tube.



- Re-fit mount to vehicle.

Note - It is recommended that a licenced workshop or tradesperson carry out the below procedure and that workshop manual and relevant safety procedures are followed in addition to the above.