

Instructions Lower Engine Mount - Bushings

N.B: This instruction sheet should be used in conjunction with the workshop manual and proper safety procedures followed.

- Raise vehicle evenly and safely support with suitable stands.

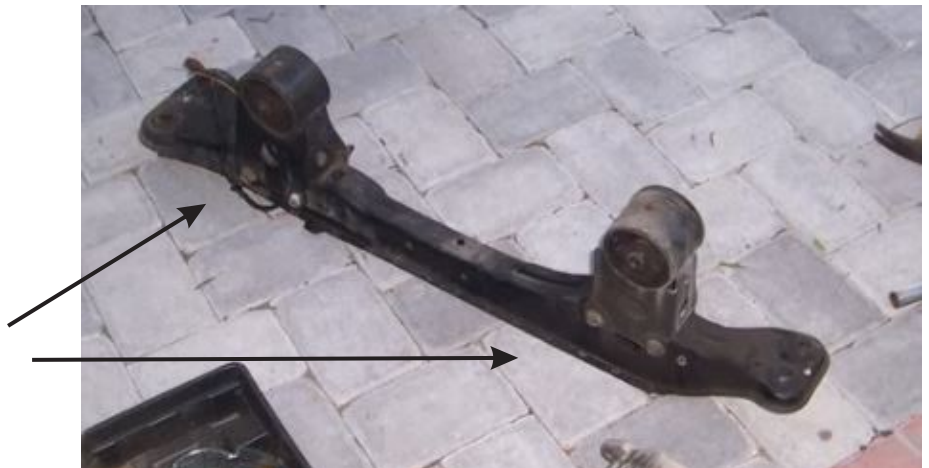
Never rely on a Jack only.

- Proceed to un-bolt lower cross member - see image below.

Note - the cross member can be removed without having to support engine.

- Press out old bushings including steel outer shell.
- Press in new supplied bushing **91611**
Tip - soapy water can be used to help pop into cross member Eye.
- Apply small amount of grease to internal diameter of bushing, then pop in supplied steel tube - this will help with install.
- Re-fit cross member to vehicle.
Start all bolts loosely before tightening.
- Road test - re-check all bolts after 100 miles

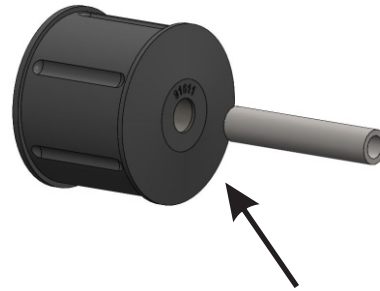
Press out old bushings with hydraulic Press - including steel outer shell.



Application - Nissan Maxima
- 1995-2003

(Always refer complete catalogue listing)

Contents - Bushing 91611 x2
- Steel tube 19 x 12.6 x 94
- Grease



Important - thin side with part number to face drivers side (LHD cars)
passenger side (RHD cars)

(note original bushings orientation before pressing out)

N.B: It is recommended that a licenced workshop or tradesperson carry out the above procedure and that workshop manual and relevant safety procedures are followed in addition to the above.