

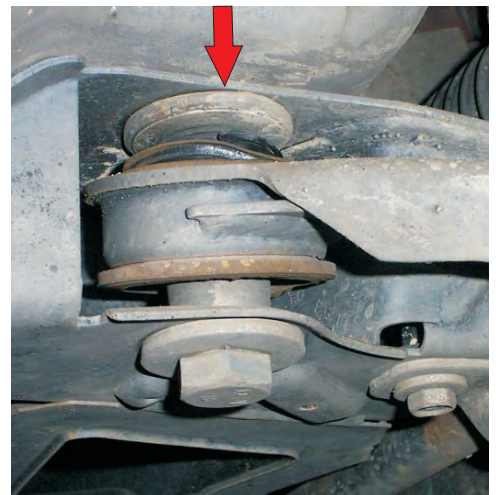
CHRYSLER PT CRUISER & NEON

FRONT LOWER CONTROL ARM SOLUTION

The original front lower control arm on PT Cruiser & Neon uses an "A" type design arm that has the rear bush mounted vertically. The constant distortion of this bush as the control arm moves up and down combined with braking loads and our road conditions lead to premature failure of these bushes. There is normally no noise to indicate failure as the original rubber in the bush separates from its steel case or splits. This failure is often not diagnosed due to the gradual decline in performance. The steering and handling response declines and in severe cases tyre wear can increase. It is common for these vehicles to have the original bushes replaced under warranty. Diagnosis is best carried out on a two post hoist with the wheels hanging and by inspecting the top of the bush. The replacement Nolathane 45463 kit is a two piece bush for easy installation. The image to the right shows the Nolathane bush installed into the arm with the special washers (included in the kit). Earlier model Neon's from July 1996 to Aug 1999 use Nolathane 45506 kit. This kit is essentially the same as Nolathane 45463 but is 10mm shorter. Once installed an immediate improvement in steering response and handling can be noticed.



Rubber protruding from case with wheels hanging.



45463



PT Cruiser 7/2000 to date
Neon 9/1999 to 7/2002

45506



Neon 7/1996 to 8/1999

PT Cruiser 7/2000 on

Front Control arm – lower inner front bush kit
Front Control arm – lower inner rear bush kit
Front Sway bar – link bush kit
Front Sway bar – mount bush kit 20mm ID

Part No.

45476
45463
42460
42456

Neon 7/1996 – 7/2002

Front Control arm – lower inner front bush kit
Front Control arm – lower inner rear bush kit (96-99)
Front Control arm – lower inner rear bush kit (99-02)

45476
45506
45463

Designed to integrate and offer a fully balanced handling solution. **Nolathane** suspension offers replacement bushes and alignment products. So for a catalogue, brochure or technical information on any of the **Nolathane** products contact the Redranger team on **1300 88 2355** or visit www.nolathane.com.au

Technical Hotline - Aus 1300 882 355 NZ 0800 880 189
www.nolathane.com.au or tech@redranger.com.au

Redranger P/L - 4 Warringah Close, Somersby NSW 2250
ABN 99 124 177 297