

Nolathane Part No. 46138A

Commodore Adjustable Independent Rear Suspension (I.R.S.) Kit



NEW DESIGN

This ADJUSTABLE I.R.S. kit suits:

Commodore VP - VZ, VU

Monaro V2

Statesman / Caprice VQ-WL

Adventra

Calibra YE, YE95

Lexcen VP-VS

NEW DESIGN KIT 46138A is easier to fit to outer mounts!

Independent Rear Suspension (I.R.S.) was introduced on some VP, VR & VS models from July'93 and from Sept'97 most VT - VY models run I.R.S. as standard equipment. This I.R.S. system is NOT originally adjustable on the above models for camber with only the VX2-on having toe adjustment via the new "Multi-Link". The opportunity to adjust toe &/or camber on these thousands of vehicles is not limited to lowered vehicles but also to rep's wagons, tradesman's utes and family cars which tow or carry loads (poor tyre wear).

The old 46138 kit can be difficult to install to the outer mounts on VT-VZ due to the shape of the floor pan, as there is limited room to fit the long splined bolt.

The new 46138A kit uses 2 bolts per mount instead of one long splined bolt.

With 46138A a 25mm short bolt & washer is threaded into one end of the eccentric crush tube and a 45mm bolt with locknut and washer is installed into the other end. Once the long bolt has been tightened to bottom out in the crush tube, adjustment can be obtained by turning the bolt further in a clockwise direction. Thus, rotating the eccentric crush tube and providing adjustment. The half locknut and spring washer on the 45mm bolt as well as the 25mm bolt can then be tightened to maintain the setting.



We recommend 1 kit mounted inboard for vehicles down to FE2 height and 2 kits (inner & outer) for vehicles below FE2. Please note: As there is only 1 floating CV joint on all models from VS2 on, care MUST be taken to use the inner kit to adjust toe ONLY & the outer kit for camber adjustment ONLY due to potential driveline damage / vibration. ON MODELS FROM VX2 ON WITH THE OE "MULTI-LINK" REAR TOE ADJUSTER, FIT ONLY THE OUTER KIT FOR CASTER ONLY.

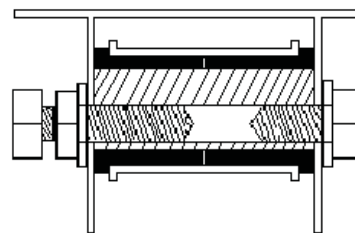


Kit contents:

- 2 x Eccentric, threaded steel crush tubes
- 4 x Nolathane bushes
- 2 x 25mm High tensile bolts
- 2 x 45mm High tensile bolts
- 4 x Spring washers
- 2 x High tensile half locknuts
- 1 x Nolathane grease sachet

Final Assembly (Cross Section View)

Long bolt with locknut & washer



Short bolt & washer

Wheel Alignment Recommendations (each wheel):

Camber: -1.5 degrees +/- 0.5

Toe: +1mm +/-0.2mm

Typical adjustment - Inner kit only: 6-8mm toe or 0.5 degrees camber

Designed to integrate and offer a fully balanced handling solution. **Nolathane** suspension offers replacement bushes and alignment products. So for a catalogue, brochure or technical information on any of the **Nolathane** products contact the Redranger team on **1300 88 2355** or visit www.nolathane.com.au

Technical Hotline - Aus 1300 882 355 NZ 0800 880 189
www.nolathane.com.au or tech@redranger.com.au

Redranger P/L - 4 Warringah Close, Somersby NSW 2250
ABN 99 124 177 297