

Instructions

Body Mount Bushings

N.B: This instruction sheet should be used in conjunction with the workshop manual and proper safety procedures followed.

Page 1 of 2

Application - Dodge Ram 2500/3500
- 2003-2005

(Refer current catalogue for complete listing)

Note: Any rusted nuts or bolts will require lubricant prior to disassemble.

When removing each mount, be sure to note each location on vehicle. Also, any existing shims will need to be re-used in their respective point

Contents - Bushing 91499 x4
- Bushing 91501 x4
- Bushing 91502 x4
- Bushing 91556 x4

- Steel tubes 28.6x12x65 x8

- Flat washer 44mm OD x8
- Flat washer 76mm OD x8
- Flat washer 89mm OD x8

- Bolt M12x100mm x8

- Loosen all bolts on both sides of vehicle initially.

Be careful of fan shroud and other components while lifting. A hydraulic jack and timber may be used to lift the body.

- Proceed by replacing mounts from 1 side of vehicle at a time.
Note - new bolts are supplied.

- Replace 1 mount at a time, but do not tighten new bolts yet - note diagram on page 2 for bushing position.

- Once all mounts are replaced, confirm body is straight/aligned - tighten all nuts to Manufacturers specifications.

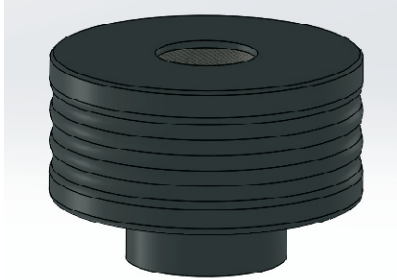
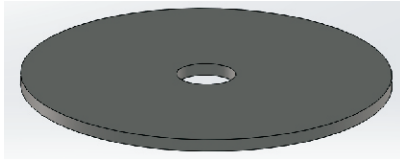
- It is recommended all hardware is re-checked after 500kms travelled.



N.B: It is recommended that a licenced workshop or tradesperson carry out the above procedure and that workshop manual and relevant safety procedures are followed in addition to the above.

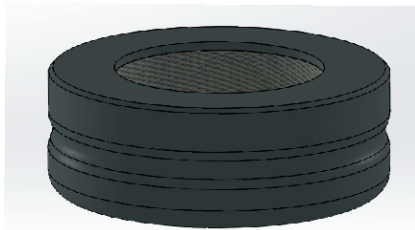
Instructions

Body Mount Bushings

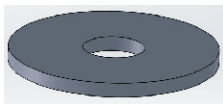
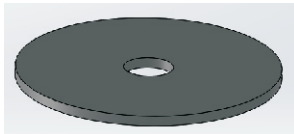


Bushing 91499

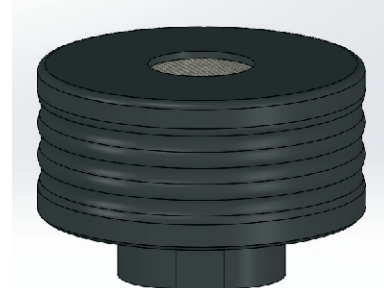
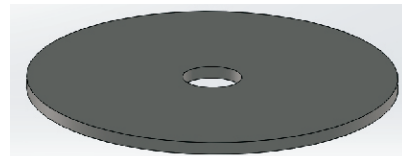
Position #1 and #3 - use new steel tubes and bolts



Bushing 91556

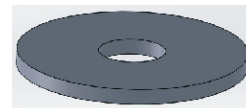
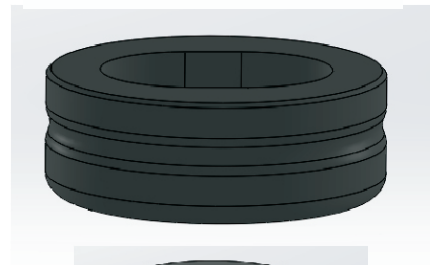


Bushing 91501



Position #2 and #4 use new steel tubes and bolts

Bushing 91502



N.B: It is recommended that a licenced workshop or tradesperson carry out the above procedure and that workshop manual and relevant safety procedures are followed in addition to the above.