

# Instructions

## Body Mount Bushings

**N.B:** This instruction sheet should be used in conjunction with the workshop manual and proper safety procedures followed.

Page 1 of 2

**Application** - Ford F250 F350 F450 F550  
-- Super Duty

Note: Any rusted nuts or bolts will require lubricant prior to disassemble.

(Refer current catalogue for complete listing)

When removing each mount, note any existing shims will need to be re-used in their respective point

**Contents** Bushing 91269 x 4  
- Bushing 91275 x 4  
- Bushing 91288 x 2  
- Bushing 91289 x 2

- Loosen all bolts on both sides of vehicle initially.

**Be careful of fan shroud and other components while lifting.**  
**A hydraulic jack and timber may be used to lift the body.**

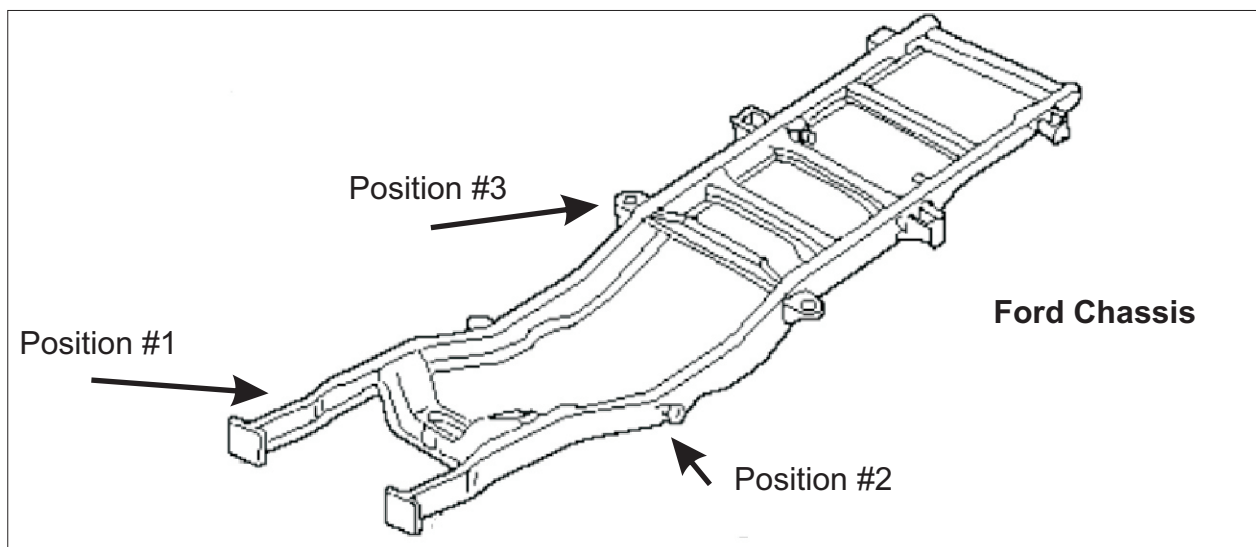
- Proceed by replacing mounts from 1 side of vehicle at a time.

**Note - Ford mounts need to be 'hit' apart. Access bolts from inside of vehicle and loosen (but do not remove bolt yet). Now hit bolt downwards with mallet - to loosen mount away from frame.**

- Replace 1 mount at a time, but do not tighten bolts yet - note diagram on page 2 for bushing position. Re-use steel components in lower mount (use a knife to completely remove rubber surrounding steel washer/nut).

- Once all mounts are replaced, confirm body is straight/aligned - tighten all nuts to Manufacturers specifications.

- It is recommended all hardware is re-checked after 500kms travelled.



**N.B:** It is recommended that a licenced workshop or tradesperson carry out the above procedure and that workshop manual and relevant safety procedures are followed in addition to the above.

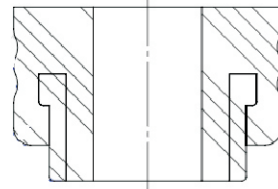
# Instructions

## Body Mount Bushings

Page 2 of 2

### Positions #1

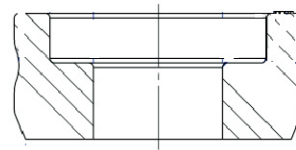
Upper bushing  
#91288



Frame

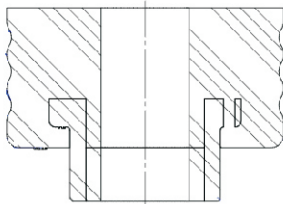
Frame

Lower Bushing  
#91289



### Positions #2

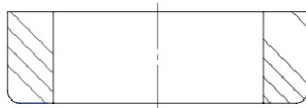
Upper Bushing  
#91269



Frame

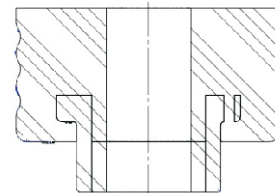
Frame

Lower Bushing  
#91275



### Positions #3

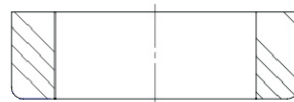
Upper Bushing  
#91269



Frame

Frame

Lower Bushing  
#91275



N.B: It is recommended that a licenced workshop or tradesperson carry out the above procedure and that workshop manual and relevant safety procedures are followed in addition to the above.