

# Instructions Rear Swaybar

**N.B:** This instruction sheet should be used in conjunction with the workshop manual and proper safety procedures followed.

1. Raise vehicle evenly and safely support.
2. Grease D bushing ID and position on swaybar.
3. Using supplied 2x axle brackets, U bolts, flat plates and saddles, sit swaybar on top side of diff - refer image 2. Swaybar should be facing rear of car.

Note - careful of any brake lines.

Assemble nuts and washers but do not tighten yet.

4. Using supplied 2x link bolts, initially mount link to swaybar (lowered cars may use shorter link).

Note - face cupped link washers away from link bushings.  
(this will aid for articulation)

5. Confirm chassis is perpendicular to swaybar at ride height. Also confirm no clearance issues with exhaust etc. (Select appropriate link length for your vehicle). Bolt up link to inside of chassis rail using existing hole.

NOTE - do not over tighten link bushings

6. Check all nuts are now tight.
7. Road test and re-check all nuts and bolts after initial 100kms.

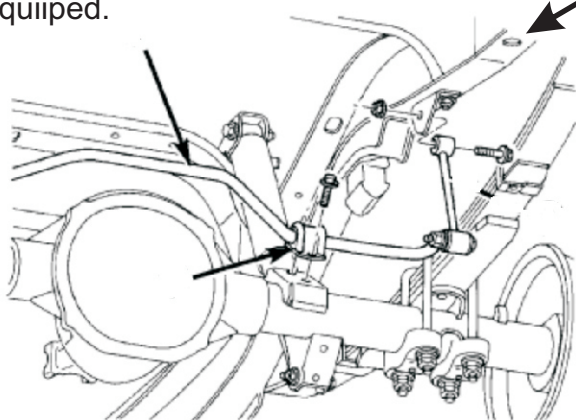
## Application:

Dodge Dakota 1997-2004

## Kit Contents:

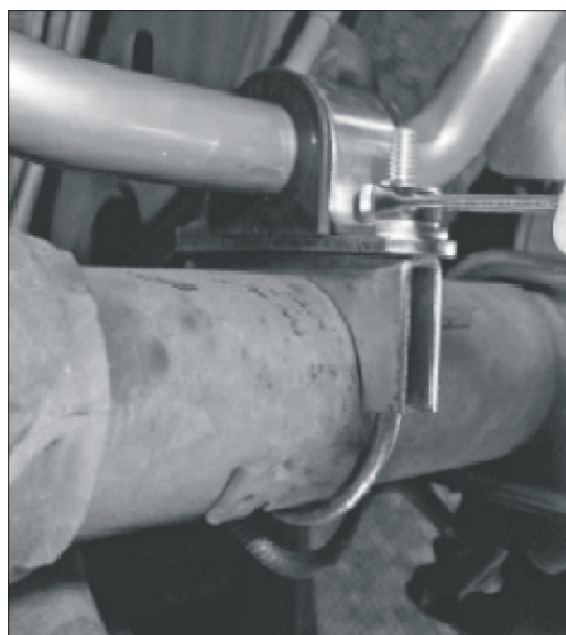
1x Swaybar  
2x Flat plates  
2x Saddles  
2x D bushings  
2x U bolts with nuts  
2x Flat plates  
4x Link bolts (choose 2)  
2x Link spacer tubes  
8x Cupped washers  
6x Nyloc nuts  
8x Flat washers  
8x Link bushings  
1x Grease

Remove OE rear bar if equipped.



Note existing hole in chassis rail - mount supplied link here

Note Axle fitment - image 2



**N.B:** It is recommended that a licenced workshop or tradesperson carry out the above procedure and that workshop manual and relevant safety procedures are followed in addition to the above.